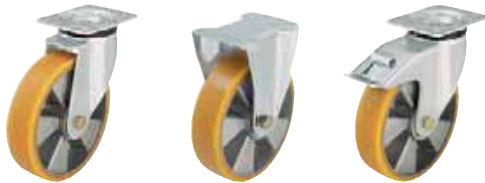


Series: LK-ALTH, BK-ALTH, BH-ALTH  
**Pressed steel swivel and fixed castors,  
medium heavy duty brackets**

180 - 600 kg



**Brackets:** LK/BK/BH Series - Pressed from heavy sheet-steel, swivel bracket with double ball bearing in the reinforced swivel head, dynamically pressed in accordance with special Blickle procedure resulting in an extremely low swivel head play and a long service life, strong central kingpin (wheel Ø 125x54 - 200x50 mm) and swivel head sealing, bolted wheel axle, zinc-plated.

**Wheels:** ALTH Series - Treads: Made of Blickle Extrathane® polyurethane, firmly bonded, colour light brown, non-marking, 92° shore A, elastic, abrasion-resistant, high cut and tear propagation resistance, non-staining, floor-saving, low-noise operation, low rolling resistance, very good chemical connection with the wheel centre. Wheel centres: Made of aluminium die-cast, corrosion-resistant, ball bearing, colour aluminium. Detailed description: Page 218 and 44.

Top plate drawings: Page 71.  
Detailed description: Page 63 and 76.

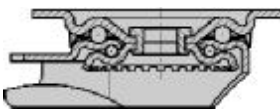
**Swivel castors**

**Fixed castors**

**Swivel castors with "stop-fix" brake**

Ref. No.	Ref. No.	Ref. No.	Wheel Ø [mm]	Wheel width [mm]	Load capacity [kg]	Bearing version	Total height [mm]	Plate size [mm]	Bolt hole spacing [mm]	Bolt hole Ø [mm]	Offset swivel castor [mm]
LK-ALTH 80K	BK-ALTH 80K	*	80	30	180	Ball bearing	110	100 x 85	80 x 60	9	40
LK-ALTH 100K-1	BK-ALTH 100K-1	LK-ALTH 100K-1-FI	100	40	250	Ball bearing	130	100 x 85	80 x 60	9	45
LK-ALTH 100K-3	BK-ALTH 100K-3	LK-ALTH 100K-3-FI	100	40	250	Ball bearing	130	140 x 110	105 x 75-80	11	45
LK-ALTH 125K-1	BK-ALTH 125K-1	LK-ALTH 125K-1-FI	125	40	250	Ball bearing	155	100 x 85	80 x 60	9	48
LK-ALTH 125K-3	BK-ALTH 125K-3	LK-ALTH 125K-3-FI	125	40	250	Ball bearing	155	140 x 110	105 x 75-80	11	48
LK-ALTH 127K	BH-ALTH 127K	LK-ALTH 127K-FI	125	54	450	Ball bearing	170	140 x 110	105 x 75-80	11	55
LK-ALTH 150K	BH-ALTH 150K	LK-ALTH 150K-FI	150	50	500	Ball bearing	197	140 x 110	105 x 75-80	11	63
LK-ALTH 160K	BH-ALTH 160K	LK-ALTH 160K-FI	160	50	550	Ball bearing	202	140 x 110	105 x 75-80	11	63
LK-ALTH 180K	BH-ALTH 180K	LK-ALTH 180K-FI	180	50	600	Ball bearing	223	140 x 110	105 x 75-80	11	65
LK-ALTH 200K	BH-ALTH 200K	LK-ALTH 200K-FI	200	50	600	Ball bearing	245	140 x 110	105 x 75-80	11	65

\* For the "stop-top" brake version, refer to Variants / Accessories.



12

Further information on the internet: [www.blickle.de](http://www.blickle.de)

**Variants / Accessories**



	Antistatic version, non-marking grey	With "stop-top" brake	With "ideal-stop" brake ttl. height + 17mm**	With directional lock (retro fit)*** 1 x 360°	With directional lock (retro fit)*** 1 x 360°
Technical description page	44	77	77	78	78
Ref. No. extension	-AS	-ST	-IS	RI-03.03	RI-05.03
Available for wheel Ø [mm]	Upon request	All sizes	160 + 200	100 + 125x40 plate 140x110	125x54 - 200

\*\* Matching synthetic adapter plate for total height compensation for swivel and fixed castors without "ideal-stop" brake: Ref. No. AP3.  
\*\*\* Only for swivel castors without brake.