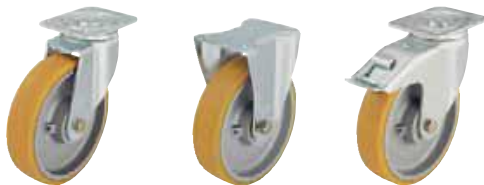
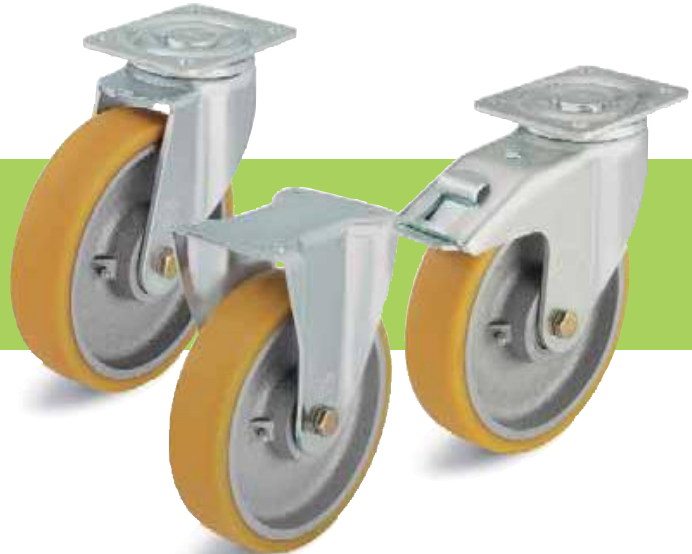


Series: LH-GTH, BH-GTH

Pressed steel swivel and fixed castors, heavy duty brackets

350 - 900 kg



Brackets: LH/BH Series - Pressed from sheet-steel, swivel bracket with heavy fork and top plate, very strong bolted and secured central kingpin, double ball bearing in the swivel head, additionally reinforced by the integration of four specially shaped and hardened bearing seats resulting in a very high resistance to shock and impact loads, bolted wheel axle, zinc-plated.

Top plate drawings: Page 71.
Detailed description: Page 63 and 76.

Wheels: GTH Series - Treads: Made of Blickle Extrathane® polyurethane, firmly bonded, colour light brown, non-marking, 92° shore A, elastic, abrasion-resistant, high cut and tear propagation resistance, non-staining, floor-saving, low-noise operation, low rolling resistance, very good chemical connection with the wheel centre. Wheel centres: Made of grey cast iron, very rugged, ball bearing, grease nipple for wheel Ø of 150 mm or larger. Lacquered - colour silver.
Detailed description: Page 228 and 45.

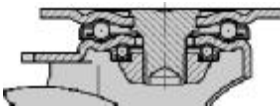
Swivel castors

Fixed castors

Swivel castors with "stop-fix" brake

Ref. No.	Ref. No.	Ref. No.	Wheel Ø [mm]	Wheel width [mm]	Load capacity [kg]	Bearing version	Total height [mm]	Plate size [mm]	Bolt hole spacing [mm]	Bolt hole Ø [mm]	Offset swivel castor [mm]
LH-GTH 100K-1	BH-GTH 100K-1	LH-GTH 100K-1-FI	100	40	350	Ball bearing	140	100 x 85	80 x 60	9	45
LH-GTH 100K-3		LH-GTH 100K-3-FI	100	40	350	Ball bearing	140	140 x 110	105 x 75-80	11	45
LH-GTH 125K-1	BH-GTH 125K-1	LH-GTH 125K-1-FI	125	40	450	Ball bearing	165	100 x 85	80 x 60	9	45
LH-GTH 125K-3	BH-GTH 125K-3	LH-GTH 125K-3-FI	125	40	450	Ball bearing	165	140 x 110	105 x 75-80	11	45
LH-GTH 127K	BH-GTH 127K	LH-GTH 127K-FI	125	50	550	Ball bearing	170	140 x 110	105 x 75-80	11	55
LH-GTH 150K	BH-GTH 150K	LH-GTH 150K-FI	150	50	700	Ball bearing	197	140 x 110	105 x 75-80	11	65
LH-GTH 160K	BH-GTH 160K	LH-GTH 160K-FI	160	50	750	Ball bearing	202	140 x 110	105 x 75-80	11	65
LH-GTH 175K	BH-GTH 175K	LH-GTH 175K-FI	175	50	800	Ball bearing	220	140 x 110	105 x 75-80	11	67
LH-GTH 200K	BH-GTH 200K	LH-GTH 200K-FI	200	50	900	Ball bearing	245	140 x 110	105 x 75-80	11	70
LH-GTH 202K		*	200	80	800	Ball bearing	245	140 x 110	105 x 75-80	11	70
LH-GTH 250K	BH-GTH 250K	*	250	60	900	Ball bearing	295	140 x 110	105 x 75-80	11	82

* For the "stop-top" brake version, refer to Variants / Accessories.



12

Further information on the internet: www.blickle.de

Variants / Accessories



	With "stop-top" brake	With "ideal-stop" brake tfl. height + 17mm**	With directional lock (retro fit)*** 1 x 360°	With sealing + grease nipple in the swivel head ***	Truck lock
Technical description page	77	77	78	63	78
Ref. No. extension	-ST	-IS	RI-05.03	-DN	FF160 / FF200
Available for wheel Ø [mm]	All sizes	160 + 200x50	125x50 - 200x50	Upon request	160 - 200 Rest upon request

** Matching synthetic adapter plate for total height compensation for swivel and fixed castors without "ideal-stop" brake: Ref. No. AP3.

*** Only for swivel castors without brake.