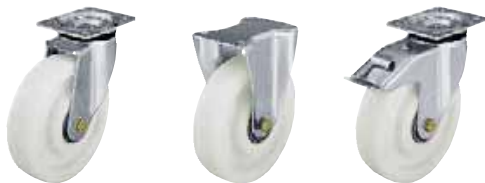


Series: LK-SPO, BK-SPO, BH-SPO

Pressed steel swivel and fixed castors, medium heavy duty brackets

250 - 600 kg



Brackets: LK/BK/BH Series - Pressed from heavy sheet-steel, swivel bracket with double ball bearing in the reinforced swivel head, dynamically pressed in accordance with special Blickle procedure resulting in an extremely low swivel head play and a long service life, strong central kingpin (wheel Ø 125x54 - 200x50 mm) and swivel head sealing, bolted wheel axle, zinc-plated.

Wheels: SPO Series - Made of high-quality nylon, very rugged, colour natural white, high abrasion resistance, low rolling resistance, smooth running performance on even floors, shock and impact-resistant, corrosion-resistant, high chemical resistance to alcohol, salts, greases and certain acids and lyes in diluted concentration, plain or ball bearing.
Detailed description: Page 262, 263 and 47.

Top plate drawings: Page 71.
Detailed description: Page 63 and 76.

Swivel castors	Fixed castors	Swivel castors with "stop-fix" brake
----------------	---------------	--------------------------------------

Ref. No.	Ref. No.	Ref. No.	Wheel Ø [mm]	Wheel width [mm]	Load capacity [kg]	Bearing version	Total height [mm]	Plate size [mm]	Bolt hole spacing [mm]	Bolt hole Ø [mm]	Offset swivel castor [mm]
LK-SPO 75G	BK-SPO 75G	*	75	32	250	Plain bearing	108	100 x 85	80 x 60	9	40
LK-SPO 75K	BK-SPO 75K	*	75	32	250	Ball bearing	108	100 x 85	80 x 60	9	40
LK-SPO 100G-1	BK-SPO 100G-1	LK-SPO 100G-1-FI	100	37	250	Ball bearing	130	100 x 85	80 x 60	9	45
LK-SPO 100K-1	BK-SPO 100K-1	LK-SPO 100K-1-FI	100	37	250	Ball bearing	130	100 x 85	80 x 60	9	45
LK-SPO 100G-3	BK-SPO 100G-3	LK-SPO 100G-3-FI	100	37	250	Plain bearing	130	140 x 110	105 x 75-80	11	45
LK-SPO 100K-3	BK-SPO 100K-3	LK-SPO 100K-3-FI	100	37	250	Ball bearing	130	140 x 110	105 x 75-80	11	45
LK-SPO 125G-1	BK-SPO 125G-1	LK-SPO 125G-1-FI	125	40	250	Plain bearing	155	100 x 85	80 x 60	9	48
LK-SPO 125K-1	BK-SPO 125K-1	LK-SPO 125K-1-FI	125	40	250	Ball bearing	155	100 x 85	80 x 60	9	48
LK-SPO 125G-3	BK-SPO 125G-3	LK-SPO 125G-3-FI	125	40	250	Plain bearing	155	140 x 110	105 x 75-80	11	48
LK-SPO 125K-3	BK-SPO 125K-3	LK-SPO 125K-3-FI	125	40	250	Ball bearing	155	140 x 110	105 x 75-80	11	48
LK-SPO 127G	BH-SPO 127G	LK-SPO 127G-FI	125	50	600	Plain bearing	170	140 x 110	105 x 75-80	11	55
LK-SPO 127K	BH-SPO 127K	LK-SPO 127K-FI	125	50	600	Ball bearing	170	140 x 110	105 x 75-80	11	55
LK-SPO 150G	BH-SPO 150G	LK-SPO 150G-FI	150	50	600	Plain bearing	197	140 x 110	105 x 75-80	11	63
LK-SPO 150K	BH-SPO 150K	LK-SPO 150K-FI	150	50	600	Ball bearing	197	140 x 110	105 x 75-80	11	63
LK-SPO 175G	BH-SPO 175G	LK-SPO 175G-FI	175	50	600	Plain bearing	220	140 x 110	105 x 75-80	11	65
LK-SPO 175K	BH-SPO 175K	LK-SPO 175K-FI	175	50	600	Ball bearing	220	140 x 110	105 x 75-80	11	65
LK-SPO 201G	BH-SPO 201G	LK-SPO 201G-FI	200	50	600	Plain bearing	245	140 x 110	105 x 75-80	11	65
LK-SPO 201K	BH-SPO 201K	LK-SPO 201K-FI	200	50	600	Ball bearing	245	140 x 110	105 x 75-80	11	65
LK-SPO 200G**	BH-SPO 200G**	LK-SPO 200G-FI**	200	50	600	Plain bearing	245	140 x 110	105 x 75-80	11	65
LK-SPO 200K**	BH-SPO 200K**	LK-SPO 200K-FI**	200	50	600	Ball bearing	245	140 x 110	105 x 75-80	11	65

* For the "stop-top" brake variant, refer to Variants / Accessories.

** Extra-heavy wheel design.

14

Further information on the internet: www.blickle.de

Variants / Accessories



	With pressed steel thread guard, zinc-plated	With "stop-top" brake	With "ideal-stop" brake ttl. height +17mm****	With directional lock (retro fit) *** 1 x 360°	With directional lock (retro fit) **** 1 x 360°	With stainless steel axle tube in the wheel hub	With stainless steel ball bearing in the wheel hub
Technical description page	79	77	77	78	78	79	57
Ref. No. extension	-FA	-ST	-IS	RI-03.03	RI-05.03	-XA	-XK
Available for wheel Ø [mm]	All sizes	All sizes	200	100 + 125 plate 140x110	125x50 - 200	All plain bearing versions	Upon request

*** Matching synthetic adapter plate for total height compensation for swivel and fixed castors without "ideal-stop" brake: Ref. No. AP3.

**** Only for swivel castors without brake.