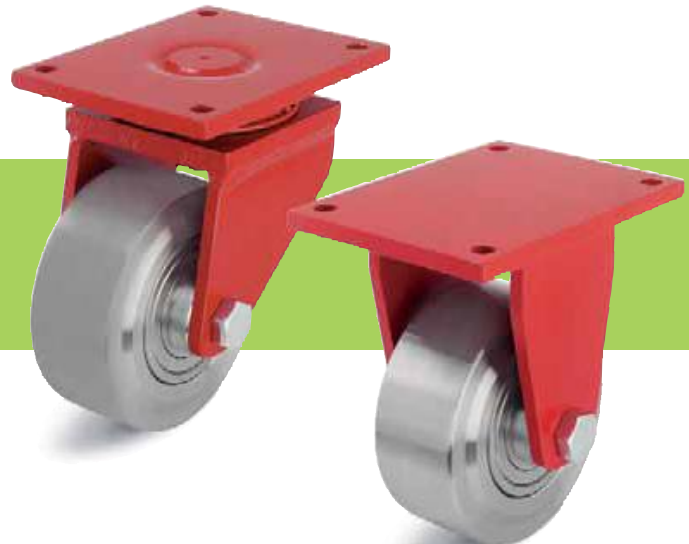


Series: LS-SVS, BS-SVS

**Welded steel extra heavy duty
swivel and fixed castors,
extra strong swivel head design**

1700 - 10000 kg

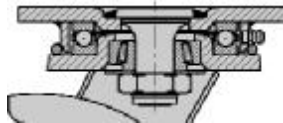


Swivel castors **Fixed castors**

Brackets: LS/BS Series - Very rugged welded steel construction, swivel bracket with axial grooved ball bearing DIN 711 and tapered roller bearing DIN 720 in the swivel head, dust and splash-proof. Fitted grease nipple, welded very strong, bolted and secured central kingpin, bolted wheel axle,
Wheel dimensions 100x40 - 200x55 mm:
Zinc-plated - yellow passivated,
wheel dimensions 200x80 - 250x65 mm:
Lacquered - colour red.
Top plate drawings: Page 71 and 72.
Detailed description: Page 64.

Wheels: SVS Series - Made of special steel, with extremely high load capacity, very high abrasion resistance, very low rolling resistance, smooth rolling performance on even floors, ball bearing, surface lightly oiled.
Detailed description: Page 288 and 49.

Ref. No.	Ref. No.	Wheel Ø [mm]	Wheel width [mm]	Load capacity [kg]	Bearing version	Total height [mm]	Plate size [mm]	Bolt hole spacing [mm]	Bolt hole Ø [mm]	Offset swivl castor [mm]
LS-SVS 100K	BS-SVS 100K	100	40	1700	Ball bearing	145	140 x 110	105 x 75-80	11	50
LS-SVS 127K	BS-SVS 127K	125	55	1750	Ball bearing	170	140 x 110	105 x 75-80	11	50
LS-SVS 150K-35	BS-SVS 150K-35	150	55	3000	Ball bearing	205	175 x 140	140 x 105	14	65
LS-SVS 201K	BS-SVS 201K	200	55	3000	Ball bearing	255	175 x 140	140 x 105	14	65
LS-SVS 200K	BS-SVS 200K	200	80	6000	Ball bearing	280	255 x 200	210 x 160	18	75
LS-SVS 250K	BS-SVS 250K	250	65	10000	Ball bearing	380	400 x 300	340 x 240	26	110



16

Further information on the internet: www.blickle.de



Variants / Accessories

	With directional lock 2 x 180°	With directional lock 4 x 90°
Technical description page	78	78
Ref. No. extension	-RI2	-RI4
Available for wheel Ø [mm]	Upon request	Upon request