
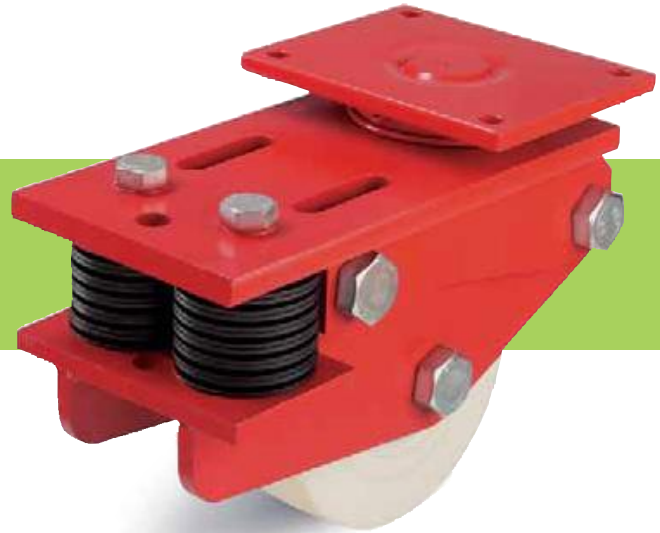


Series: LSFT-GSPO

**Spring-loaded welded steel  
extra heavy duty swivel castors**

 5000 - 6000 kg

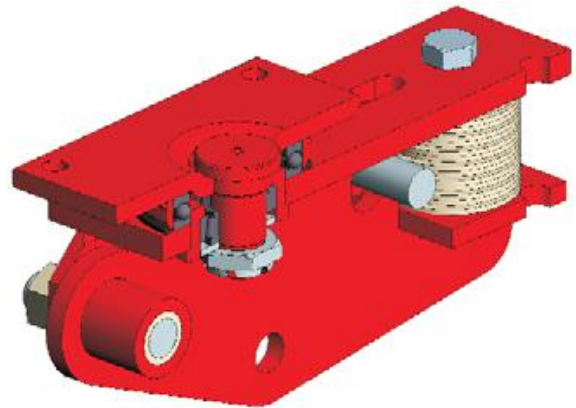


**Swivel castors**

**Brackets:** LSFT Series - Very strong welded steel construction, with axial grooved ball bearing DIN 711 and tapered roller bearing DIN 720 in the swivel head, fitted grease nipple, welded very strong, bolted and secured central kingpin, highly impact-resistant spring-hinged plate construction with double disk spring assembly, dimensioned in accordance with high safety aspects, bolted wheel axle, lacquered - colour red.  
Top plate drawings: Page 72.  
Detailed description: Page 66.

**Wheels:** GSPO Series - Made of hard and tough, highly compressed cast nylon with extremely high load capacity, high abrasion resistance, low rolling resistance, smooth running performance on even floors, shock and impact-resistant, corrosion-resistant, high chemical resistance to alcohol, salts, greases and certain acids and lyes in diluted concentration, spherical roller bearing, colour natural beige.  
Detailed description: Page 272 and 48.

Ref. No.	Wheel Ø [mm]	Wheel width [mm]	Load capacity [kg]	Spring tension [kg]	Initial tension [kg]	Spring travel [mm]	Total height [mm]	Plate size [mm]	Bolt hole spacing [mm]	Bolt hole Ø [mm]	Offset [mm]
LSFT-GSPO 203PR	200	100	5000	7500	5000	4	272	255 x 200	210 x 160	18	94
LSFT-GSPO 252PR	250	80	6000	7500	5000	4	330	255 x 200	210 x 160	18	88



Further information on the internet: [www.blickle.de](http://www.blickle.de)

**20**

**Variants / Accessories**



	Alternative spring tension	Further dimensions
Technical description page		
Ref. No. extension		
Available for wheel Ø [mm]	Upon request	Upon request